

# MONTHLY MEMBERSHIP PROGRESS REPORT

District A 5

Results as of: 6/30/2024

GMT:

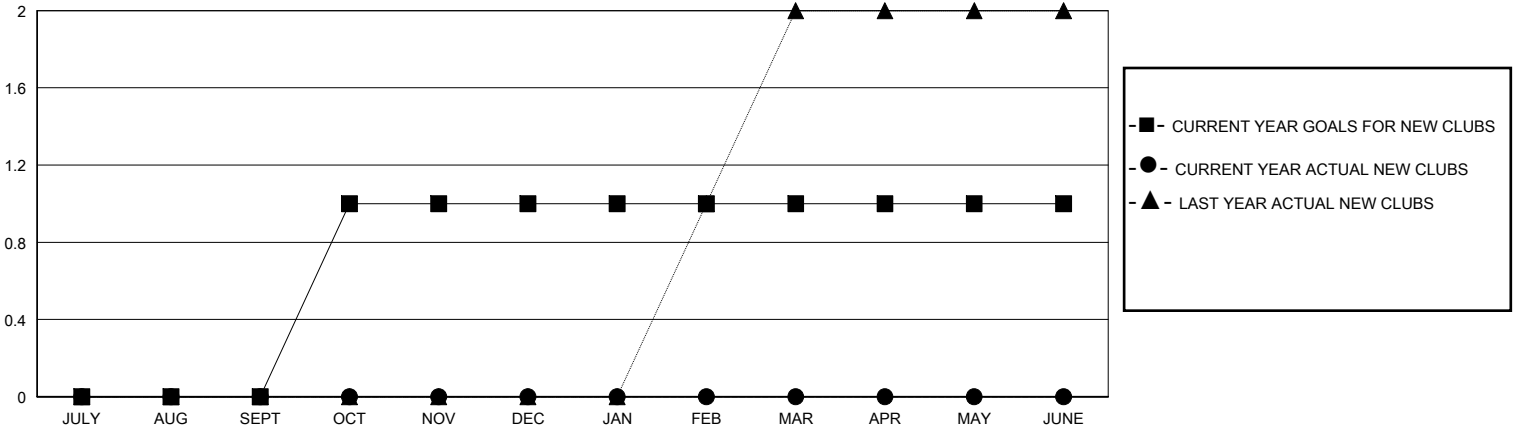
LOCATION ONTARIO

GMT CA

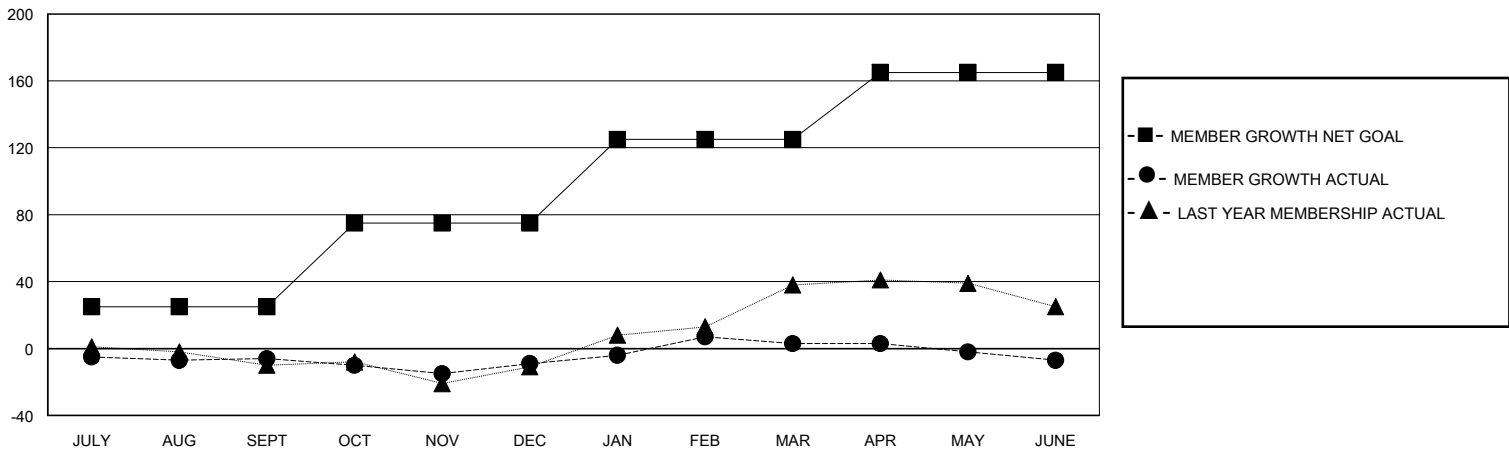
Clubs			
RESULTS FOR 2023-2024			
QUARTER	NEW CLUB GOAL	NEW CLUBS	DROPPED CLUBS
JULY/AUG/SEPT	0	0	0
OCT/NOV/DEC	1	0	0
JAN/FEB/MAR	0	0	0
APR/MAY/JUNE	0	0	0

Members			
RESULTS FOR 2023-2024			
QUARTER	MEMBER GROWTH NET GOAL	MEMBER GROWTH ACTUAL	DROPPED MEMBERS ACTUAL (including transfers)
JULY/AUG/SEPT	25	20	25
OCT/NOV/DEC	50	39	39
JAN/FEB/MAR	50	62	45
APR/MAY/JUNE	40	27	34

GOALS AND ACTUAL NEW CLUBS CUMULATIVE



GOALS AND ACTUAL MEMBERS CUMULATIVE



DROPPED CLUBS: 0

38 CLUBS OF 52 ADDED 1 OR MORE NEW MEMBERS

GENDER DISTRIBUTION

MALE 566 (50.90%)  
FEMALE 546 (49.10%)

DROPPED MEMBERS

DECEASED	23
CLUB CANCELLED	0
OTHER	120
<b>TOTAL</b>	<b>143</b>

[CLICK HERE FOR CUMULATIVE MEMBERSHIP DATA](#)

TOTAL FAMILY UNIT MEMBERS	237
FAMILY MEMBERS PAYING HALF DUES	121